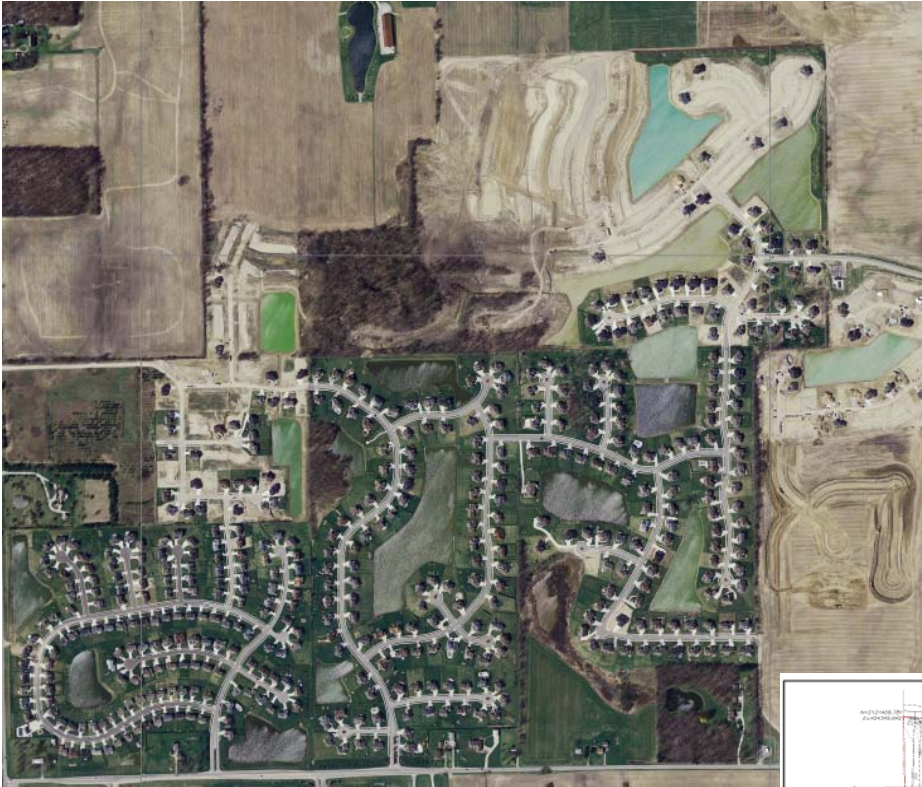


Project Description

Aerial Photograph of the Modeled Ponds in Bridgewater Subdivision



Project Overview

This project is located in Southwest Allen County. The project site straddles the Mossman Regulated Tile Drain, which is providing drainage to the Communities of Bridgewater, approximately 320 acres of single family residential development. This project site contains about 15 acres and was planned for residential use (attached condominiums.) Prior to design and permitting, this tile drain was drastically overloaded and was discharging to ground during wet weather.

Site Design and Permitting

The first segment of the design process involved land planning the condos on the property. The developer needed enough density to make the project pay, and the storm system required substantial ponds for detention and overflow capacity from Bridgewater. The land plan was developed to accommodate both requirements. After the land planning, modeling of the Bridgewater Subdivision ponds was required to

determine the overflow quantities entering our site. This modeling involved the entire subdivision and all 13 detention ponds on their site. The design of the on-site storm system was completed to protect the Bridgewater Subdivision from downstream tailwater conditions.

Estimated Project and Design Cost

The estimated construction cost of the storm improvements to the site was approximately \$150,000, while the design and surveying cost for those improvements was approximately \$25,000.

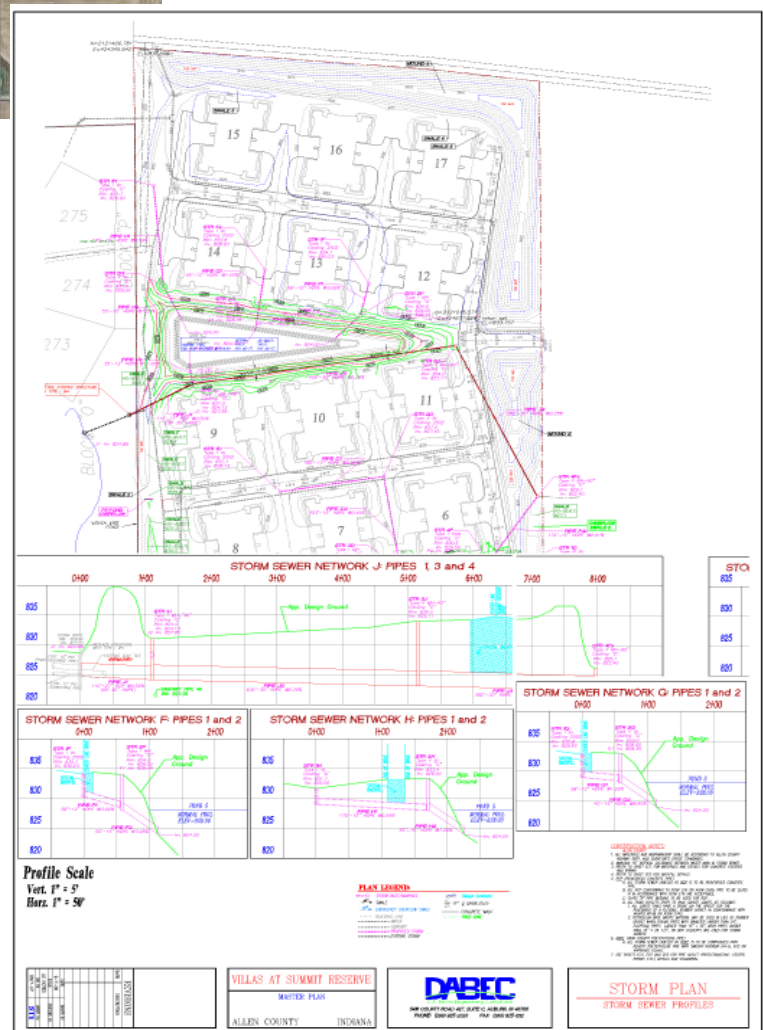
Major Design Items

DABEC design for this project included: Storm modeling for the Bridgewater Subdivision, On-site detention modeling for the project, Off-site storm modeling for the pass-through quantities, Overflow weir design, and Cascading (series) pond discharge design.

Client Reference

Tim Thiry
The Thiry Group

P.O. Box 1484
Dublin, OH 43017-6484
614-766-6922 (phone)
614-766-6923 (fax)



Storm Construction Plan Sheet with Overflow Pond and Pipe Network