

Project Description

Project Overview

This project is located in Northeast Allen County. The project site straddles the Bulleman Ditch, a tributary to the Maumee River. The project site contains about 120 acres and was planned for commercial use (offices and retail.) Prior to design and permitting, approximately 60 acres of the overall site was situated in the Floodplain of the Bulleman Ditch.

Project Design and Permitting

The first segment of the design process involved modeling the Bulleman Ditch to determine the Floodway and Floodway Fringe limits. Most of the site was covered by the Floodway Fringe, so we began the process of designing fill in these areas and compensating those volumes with additional flood detention along the ditch banks. Ultimately, the project site contained four detention basins. Three of the detention basins were for detaining the project site's runoff, while the third detention basin was set aside for flood plain mitigation.

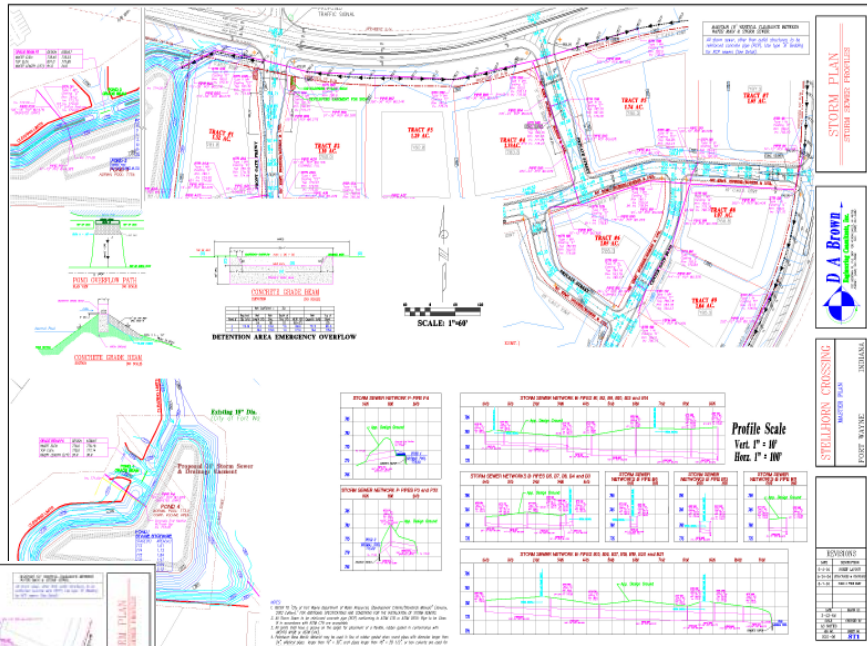


Estimated Project and Design Cost

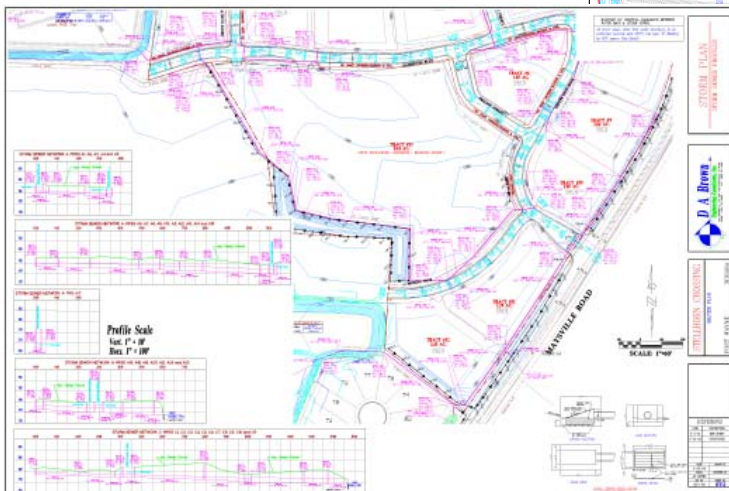
The estimated construction cost of the storm improvements to the site was approximately \$500,000, while the design and surveying cost for those improvements was approximately \$25,000.

Major Design Items

DABEC design for this project included: Flood modeling for the Bulleman Ditch, On-site detention modeling for the project, Off-site storm modeling for the pass-through quantities, Overflow weir design, and Compensating volume design and permitting.



Typical Storm Construction Document



Typical Storm Construction Document

Client Reference

Glenn Conking
Tricon Partners

PO Box 80490
Fort Wayne, IN 46898
260-489-8887 (phone)