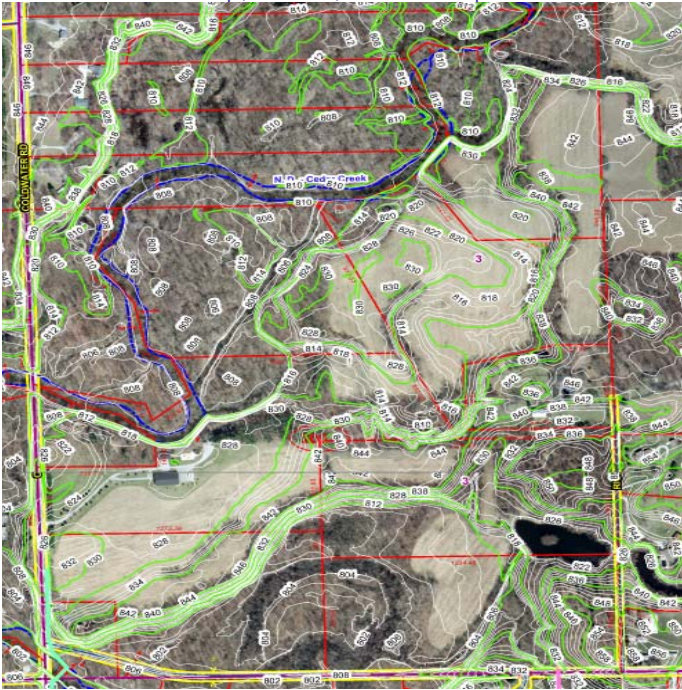


Aerial Map (with GIS info) of the New Development Area



Preliminary Route Plans Developed

We compiled property ownership information along the proposed off-site sanitary sewer routes to determine the most likely construction course and cost for construction. These routes were evaluated based upon number of septic systems contacted, number of undeveloped properties crossed, and number of easements required for the construction of the relief sewer line.

Deliverables

Finally, the preliminary system plan view sheets with a cost estimate and discussion of probable total cost to the existing 85 homes along the off-site force main route will be delivered to the Developer for their review and comment. A meeting was held to discuss the alternatives and provide insight into the various choices for Sanitary Sewer Service to this area.

Project Overview

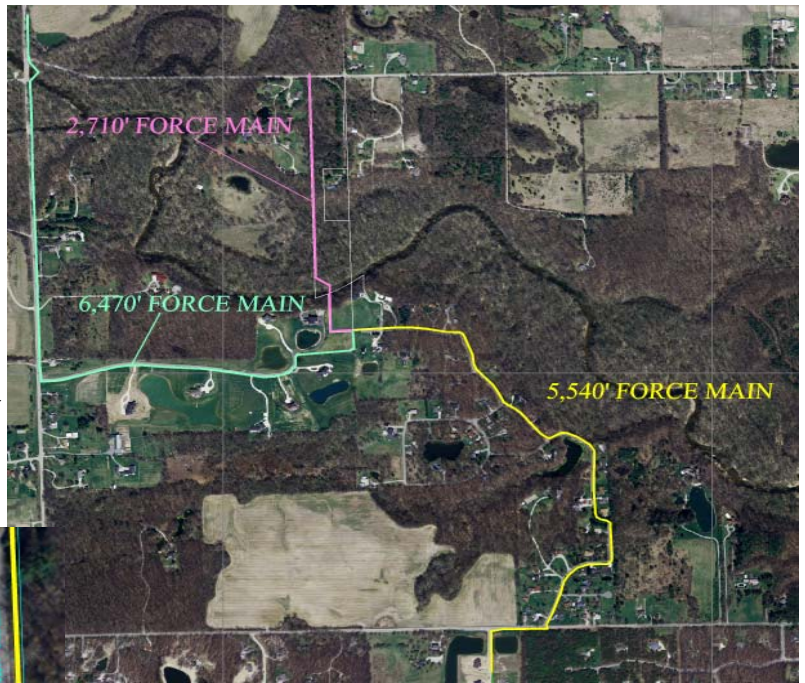
Watershed analysis, development planning study, route planning, collection system alternative study, cost estimates and preliminary plan-views of proposed construction for a sanitary sewer collection system proposed to eliminate failing septic fields and provide for new development along the Coldwater Road corridor in Northern Allen County.

Construction Cost Estimates and Study Cost

The estimated cost for the varying collection system alternatives ranged from \$200,000 to \$450,000. The Area Study to prepare the documents and cost estimates was approximately \$15,000.

Engineering Analysis Completed

Utilizing aerial photographs, two-foot contour maps, utility plans, road information, and other sources of information we chose potential routes for the proposed pipe--evaluated the potential routes and selected the lowest cost alternative for each collection system type based upon the total estimated construction cost, availability of property, reduction in existing infrastructure, and access to the proposed development areas. The final proposed routes reflect the lowest capital investment estimates along with the largest service area for each pipe/element segment.



Aerial Photo with Overview of Force Main alignment alternatives



Aerial photograph with proposed Force Main alignment

Client Reference

Mike Thomas

Oakmont Development

1020 East Dupont Rd
Fort Wayne, IN 46825
260-489-2000 (phone)
260-489-8974 (fax)