

### Project Description

#### Project Overview

This project is located on Bass Road between Thomas Road and Kroemer Road in Allen County, IN. This project included several intersections, road widening, road re-surfacing and new road striping/signage. The improvements to the surrounding streets included: R/W acquisition, drainage improvements, lane additions, and new striping. Complicating the design of these improvements were the new subdivisions added to Bass Road and their entrance geometry interfaces.

#### Transportation Improvements and Approximate Design Cost

The estimated construction cost of the improvements to the surrounding streets for this project was approximately \$500,000, while the engineering and surveying cost was approximately \$30,000.



Aerial Photograph of the Project Corridor

#### Survey and Property Research

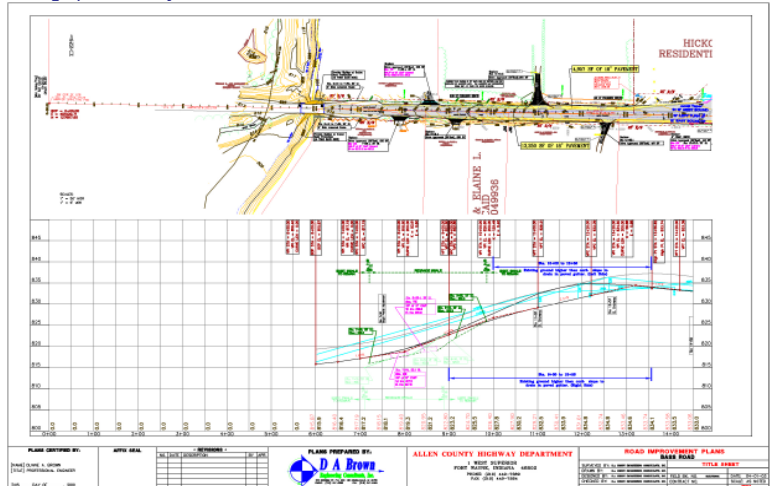
A complete topographical survey was completed for the entire project to support the transportation design effort. Additionally, boundary surveys and dedication documents were prepared for the additional R/W that had to be secured to complete this project.

#### Road Drainage Design

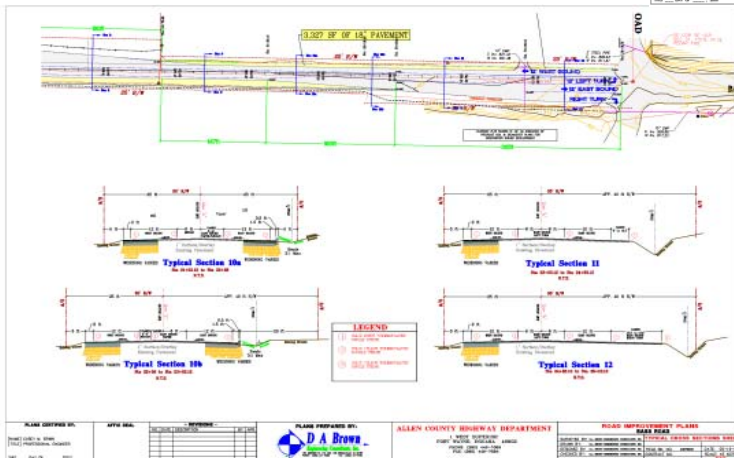
The drainage for the transportation system was integrally included in the design of the storm sewer system for the subdivisions added to Bass Road. This integration resulted in lower release rates and improved storm water quality for the road project.

#### Construction Engineering

All of the construction engineering required for this project's construction, including staking of new R/W was provided by DABEC.



Typical Sheets from Plan Set



### Client Reference

**Orrin Sessions, The Northeastern Group**

10808 LaCabreah Lane  
Fort Wayne, IN 46898  
260-489-7095 (phone)  
260-489-7950 (fax)